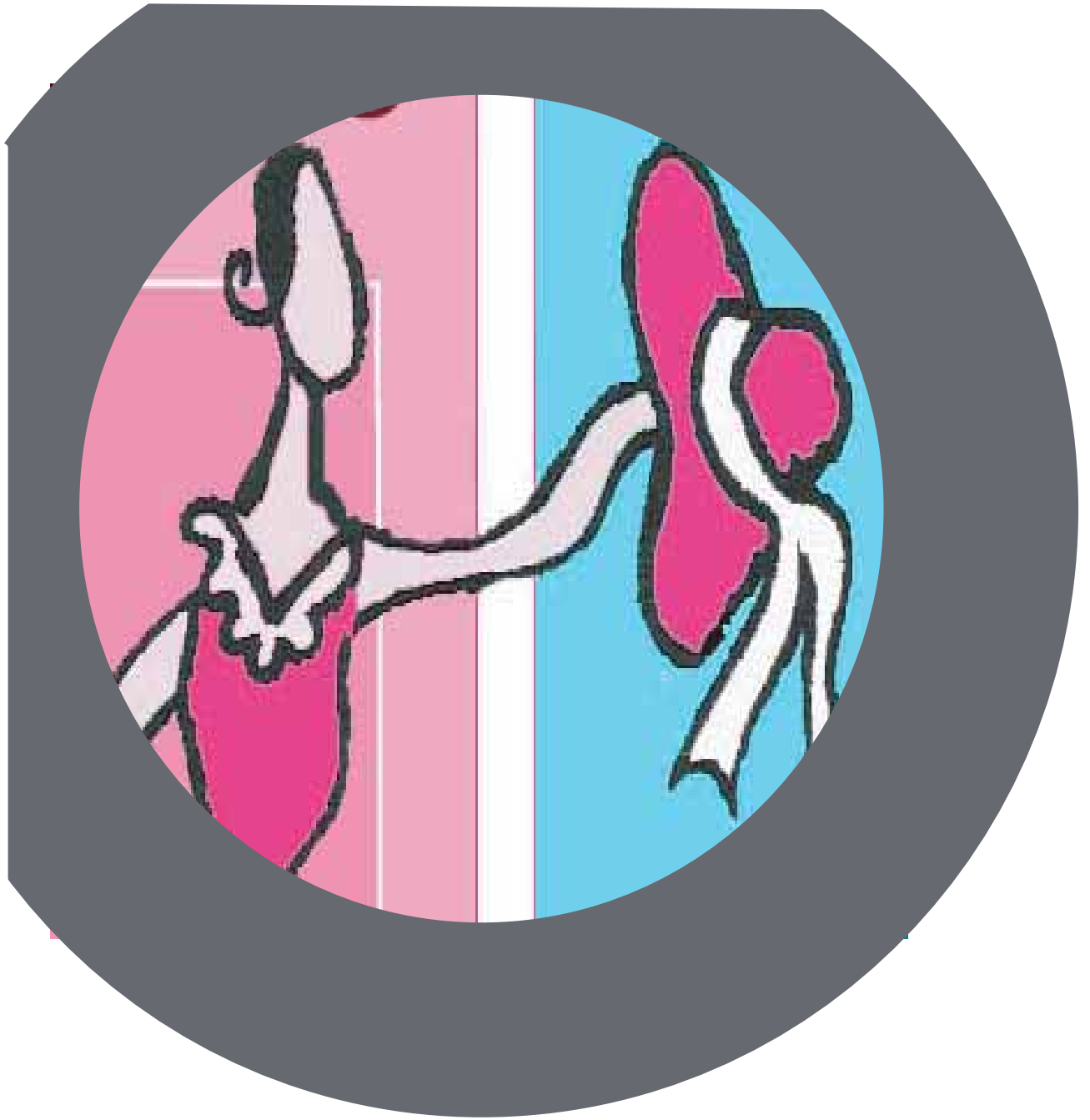


MI

Graphic Design Project

2004

2005



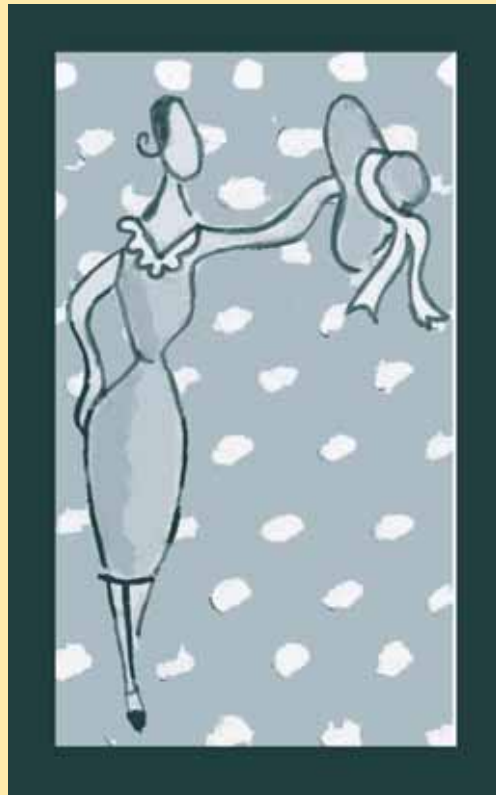
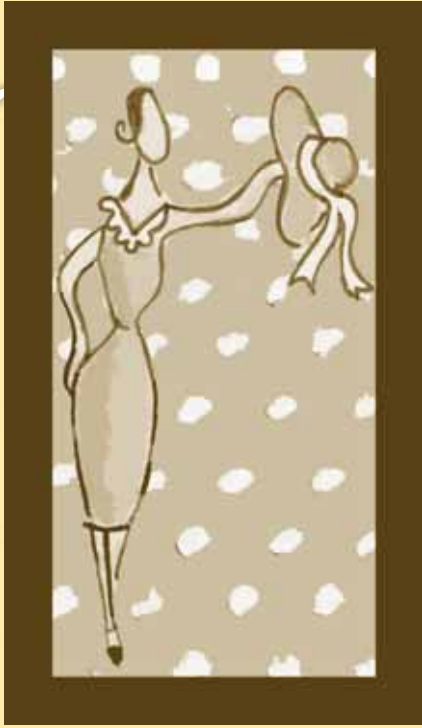
Gigi's Surprise

1940



Inspired by images in Life magazine from the 1940's,
I set to work on a logo for Gigi's Surprise,
a small buisness in the line of womens and girls clothing.





Hand Drawn



Theme in mind I got out my sketch pad and trace paper and set to work. Large hips and upper body were used to emphasize a small waist. With one arm extended and one leg forward, I gave movement to the lady. I had her head follow the direction of her arm as if lazily admiring the hat. I used the classic hairstyle of the '40's and a polka-dot background bring out the theme.

Small Child



I added a small child to the logo in order to better represent the market of girls and women.

5 Hours Later...

G i

g i's

G i g i's

S u r p r i s e



Final Published Version





Above is a combination of the Woodinville Montessori tree and an RGB color wheel. RGB stands for red, green and blue--the colors used to create white light and most colors of the digital spectrum.